

# V5425

## Quad VME Power Distributor



## Features



- 1-unit wide VME 6U module
- Four DB9 connectors with  $\pm 6$  V,  $\pm 12$  V,  $\pm 24$  V each
- Low Ripple
- Monitoring of all 6 voltages on each output
- Protection of all voltages by self-recovering electronic fuses
- Individually filtered outputs to ensure low noise operation
- Standard voltage output compatible with electronics by CAEN and many other manufacturers

## Description

The CAEN **Mod. V5425** is a 4-channel **VME power distribution** module; it converts the power supplies provided by a VME crate into  $\pm 6$  V,  $\pm 12$  V and  $\pm 24$  V outputs, suitable for preamplifiers and other devices. Output voltages are delivered through **4 Sub D9 female connectors**. The total output power is 36W (24W for  $\pm 6$  V and  $\pm 24$  outputs).

### D-Sub9 connector

9 pin female connector for Mod.V5425

Consult our **connectors reference page** for technical information.

Electronic fuses, automatically recovering after short circuit, protect the individual voltage outputs. All voltages are monitored and their status is displayed by LEDs. Low-noise preamplifiers require DC power that is free of interference generated by other modules inserted in the VME crate. The mod. V5425 ensures this low-noise capability by filtering the power lines separately at each connector.

## Technical Specifications

### Mechanical Packaging

1-unit wide VME 6U module; weight: 280g

### Power Requirements

Output:  $\pm 24\text{V}$  @ 0.25A,  $\pm 12\text{V}$  @ 0.5A,  $-6\text{V}$  @ 1.5A,  $+6\text{V}$  @ 400mA

(36W out total). Consumption:  $\pm 12\text{V}$ : 600 mA,  $+5\text{V}$ : 6.1A

Output: No Load. Consumption:  $\pm 12\text{V}$ : 0A;  $+5\text{V}$ : 200mA

### Output Connectors

Power Supply output; 4 Sub D9 female connectors

### Displays

$\pm 6\text{V}$ ,  $\pm 12\text{V}$ ,  $\pm 24\text{V}$ : green LEDs; power supply OK when ON. Fault: red LED, error status when ON

### Push button

Rearm: restore operation after an error status (Fault LED) is detected; Fault cause must be removed before sending Rearm

### Maximum Output Power

Total: 36W;  $\pm 6\text{V}$ : 24W;  $\pm 24\text{V}$ : 24W

### Current Output

Voltage, Max Current at full load, Nominal current

$+6\text{V}$ , 2.14 A, 2 A

$-6\text{V}$ , 1.62 A, 1.5 A

$+12\text{V}$ , 560 mA, 500 mA

$-12\text{V}$ , 530 mA, 500 mA

$+24\text{V}$ , 272 mA, 250 mA

$-24\text{V}$ , 275 mA, 250 mA

### Voltage drop at full load

Voltage, Drop (%)

- $+6\text{V}$ , -4.7%
- $-6\text{V}$ , -4.2%
- $+12\text{V}$ , -1.9%
- $-12\text{V}$ , -1.9%
- $+24\text{V}$ , -0.2%
- $-24\text{V}$ , -0.3%

### Voltage Ripple

- $\pm 6V$ : 1 mVpp
  - $\pm 12V$ : 2 mVpp
  - $+24V$ : 3 mVpp
  - $-24V$ : 5 mVpp
- (typical values, 16Hz ÷ 20MHz bandwidth)

### Vout / Temperature coefficient 10°C ÷ 60°C range

- $+6V$ : 155 ppm/°C
- $-6V$ : 178 ppm/°C
- $+12V$ : 48 ppm/°C
- $-12V$ : 72 ppm/°C
- $+24V$ : 18 ppm/°C
- $-24V$ : 72 ppm/°C (10°C ÷ 60°C range)

### Environmental

Indoor use

### Operating Temperature

-20 °C ÷ 50 °C

### Operating Humidity

25% ÷ 95% RH non condensing

### Storage Temperature

-30 °C ÷ +80 °C

### Storage Humidity

5% ÷ 90% RH non condensing

### Altitude

≤2000 m

### Pollution Degree

2

### Overvoltage Category

II

### EMC Environment

Commercial and light industrial

### IP Degree

IPX0 enclosure, not for wet location

## Compliance

- EMC: CE 2014/30/EU Electromagnetic compatibility Directive
- Safety: CE 2014/35/EU Low Voltage Directive
- RoHS compliant

## Ordering Options

Code	Description
WV5425XAAAAA	V5425 - Quad VME Power Distributor <span data-bbox="1300 250 1380 302">RoHS</span>

## Related Products

### VME8200



9U 21Slot VME64X Enhanced Crate series

### VME8011



7U 21 Slot VME64 Low Cost Crate

### μ-crate



Desktop single-slot VME64X Crate

### VME8008B



4U 8 Slot VME64 Mini Crate

### VME8010



7U 21 Slot VME64 Low Cost Crate

## NV8020A



7U CRATE VME/NIM 8 slot VME64 365W, 5 slot NIM 150W

## VME8004B



2U 4 Slot VME64 Mini Crate

## VME8001



1U 2 Slot VME64 Mini Crate

## VME8008X



4U 8 Slot VME64X Mini Crate

## A1422



Low-Noise Fast-Rise-Time Charge-Sensitive Preamplifiers (Boxed)

## VME8004X



2U 4 Slot VME64X Mini Crate

---

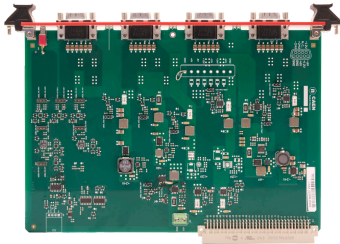
## VME8100



8U 21 Slot VME64/64X Enhanced Crate Series

---

# Gallery



**This document, or parts thereof, may not be reproduced in any form or by any means without written permission from Caen S.p.A. Although every effort has been made to ensure the accuracy of information presented in this catalog, Caen S.p.A reserves the right to modify its products specifications without giving any notice; for up to date information please visit [www.caen.it](http://www.caen.it) © Caen S.p.A - 2024**

**CAEN S.p.A.**

Via Vetraia 11  
55049 - Viareggio  
Italy

**Phone +39.0584.388.398**

**Fax +39.0584.388.959**

**info@caen.it**

**www.caen.it**

**CAEN GmbH**

Brunnenweg 9  
64331 Weiterstadt, Germany

**Phone +49 (0)212.254.4077**

**Mobile +49 (0)151.16.548.484**

**info@caen-de.com**

**www.caen-de.com**

**CAEN Technologies, Inc.**

1 Edgewater Street - Suite 101  
Staten Island, NY 10305  
USA

**Phone +1.718.981.0401**

**Fax +1.718.556.9185**

**info@caentechnologies.com**

**www.caentechnologies.com**

**CAENspa India Private Limited**

B205, BLDG42, B Wing,  
Azad Nagar Sangam CHS,  
Mhada Layout, Azad Nagar, Andheri West  
Mumbai, Maharashtra 400053, India

**info@caen-india.in**

**www.caen-india.in**

